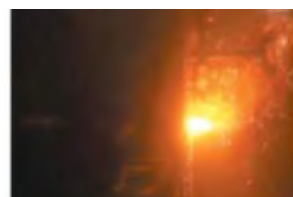
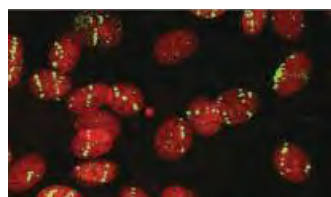


**Fukui International Human Resources Development Center  
for Atomic Energy (FIHRDC)/  
The Wakasa Wan Energy Research Center (WERC)**

# Application Guide

FIHRDC/WERC Accepting Program for  
Overseas Researchers/Research Students of  
Atomic Energy

## Secondary Recruitment



JFY2018

Secondary  
Recruitment

THE  
WAKASA WAN  
ENERGY  
RESEARCH  
CENTER



URL: For FIHRDC, <https://fihrdc.werc.or.jp/>  
For WERC, <http://www.werc.or.jp/>  
E-mail: [international@werc.or.jp](mailto:international@werc.or.jp)  
TEL: +81-(0)770-24-7272  
FAX: +81-(0)770-47-6228

AQUATOM 2F, 2-2-4 Kagura-cho, Tsuruga, Fukui 914-0063, Japan

**FIHRDC/WERC Accepting Program for Overseas Researchers/Research Students of  
Atomic Energy JFY2018  
Secondary Recruitment**

**Contents**

1.	Introduction.....	1
2.	Purpose and Objective .....	1
3.	Eligibility .....	2
4.	Definition .....	2
5.	Number to be accepted .....	2
6.	Research period.....	3
7.	Expenses borne by the WERC .....	3
8.	Host institutes .....	3
9.	Application procedure.....	3
10.	Application deadline .....	3
11.	Screening .....	3
12.	Notification .....	4
13.	Obligations of researchers and research students .....	4
14.	Protection of personal information .....	5
15.	Contact .....	5
Figure 1 System of the FIHRDC/WERC Accepting Program .....		6
Table 1 Expenses borne by the WERC for this program .....		7
Table 2 List of host institutes .....		8
Table 3 Research topics.....		8-13
Appendix 1	Application Form	
Appendix 2	Official Reference Letter	
Appendix 3	Medical Certificate	
Appendix 4	Candidate's Statement	
Appendix 5	Cover Letter	

## **1. Introduction**

FIHRDC/WERC Accepting Program for Overseas Researchers/Research Students of Atomic Energy has been managed by the Fukui International Human Resources Development Center (FIHRDC) in the Wakasa Wan Energy Research Center (WERC) in Fukui prefecture. There is a vacancy in former acceptance program, the FIHRDC will recruit a Researcher/Research student as secondary.

The FIHRDC accepts overseas researchers and research students who major in nuclear safety technology or nuclear application technologies. The FIHRDC supports their activities through arrangement for flight tickets, accommodation and administrative procedures, and others.

The system of this program is illustrated in Figure 1 (Page 6).

Related organizations are described below:

### **[Fukui Prefecture]**

Fukui Prefecture is known as an advanced area in nuclear energy. Nearly 30% of the nuclear power plants of Japan are located in the prefecture. Along with various types of nuclear reactors, there are a significant number of nuclear related facilities: training facilities, universities and institutes conducting diverse studies on nuclear safety technology and application technology.

In October 2013, the Fukui prefectural government and the International Atomic Energy Agency (IAEA) entered into “the Practical Arrangements on cooperation in the areas of nuclear energy, nuclear safety, and nuclear sciences and applications”.

### **[WERC]**

WERC was established in the context of the Energy Research and Development Centralization Plan of the Fukui prefectural government. The center is a regional based institute to support local industries as well as to conduct research and development on cancer treatment and selective breeding by using its accelerator.

### **[FIHRDC]**

FIHRDC was set up in the WERC in April 2011 to contribute to nuclear safety and the development of human resources in the field of nuclear energy. The center not only deals with this program but also offers training courses for those engaged in nuclear related fields from home/abroad and coordinates international conferences on the themes related to nuclear energy.

## **2. Purpose and Objective**

This program purposes to encourage universities, research institutes and hospitals in the Fukui prefecture to build networks and mutual collaboration with overseas counterparts. The FIHRDC/WERC accepts overseas researchers and research students of atomic energy and supports their studies to accomplish the purpose as well as to contribute to the global activities for nuclear safety and applications of atomic energy.

### 3. Eligibility

This program accepts the researchers/research students. The applicants must meet the following requirements.

#### [Researchers]

1. A PhD holder or equivalent. A person who has already conducted some researches in the related subjects at an institute, a university, or any other organization in their home country for several years after Doctorate degree, or who has an equivalent/ a higher performance in research even if they do not hold the degree.
2. A person who engages in research regarding nuclear safety technology and nuclear application technologies in their home country.
3. A person who is expected to contribute to the improvement in nuclear safety technology or nuclear application technologies after returning to home country.
4. A person who has enough foreign-language skills, in English and/or Japanese, so as not to pose a problem in research activities.
5. A person who is physically and mentally in good health so as not to pose a problem in research activities in Japan.

Note: If a person with an equivalent level qualification to a PhD applies for a research topic for 'research students', that is, its application code in Table 3 (Page 12) starts with S, and if there is no one else applicable to the topic, then the WERC regards this applicant as a 'research student' in this program.

#### [Research students]

1. A student who is enrolled in a master's/ doctoral program or equivalent in their home country.
2. A person who engages in research regarding nuclear safety and application technology in their home country.
3. A person who is expected to contribute to the improvement in nuclear safety technology and nuclear application technologies after returning to home country.
4. A person who has enough foreign-language skills, in English and/or Japanese, so as not to pose a problem in research activities.
5. A person who is physically and mentally in good health so as not to pose a problem in research activities in Japan.

### 4. Definitions

[Researchers]	Conduct research on chosen topics with the collaborative researchers of the host institute in the Fukui prefecture
[Research students]	Conduct research on chosen topics under the guidance by the supervisor and other equivalents of the host institute in the Fukui prefecture.

### 5. Number to be accepted

Approximately 1 person in total

## **6. Research period**

All researches on this program shall be completed in three months in the term of in December 3, 2018 - February 28, 2019

Note: An individual research period is to be determined considering the research topic and the situations of the researcher/research student.

## **7. Expenses borne by the WERC**

The expenses borne by the WERC are listed in Table 1 (Page 7).

## **8. Host institutes**

The hosting institutes are listed in Table 2 (Page 8).

## **9. Application procedure**

### *1. Choose your research topic*

Select ONE research topic from the research topics shown in Table 3 (Pages 8-13) that corresponds to your research area and promises certain outcomes.

### *2. Complete the application form (Appendix 1)*

Fill out the application form.

Note: An incomplete application may be rejected. However, the WERC accepts any spacing adjustment /copying of the form to fill all the required information.

### *3. Obtain official reference letter (Appendix 2)*

Ask your appropriate superior, such as the head of your organization and your professor, to complete an official reference letter.

### *4. Obtain the medical certificate (Appendix 3)*

Undertake a medical examination at a medical institution and ask the institution to complete a medical certificate.

### *5. Fill in the candidate's statement form (Appendix 4)*

Put the date signed and your signature on the statement form.

### *6. Send the application forms to the WERC*

Combine the completed papers for Appendix 1 - 4 with an official cover letter in the name of YOUR ORGANIZATION by following the form in Appendix 5. Then, please send the set of application forms in either digital or paper formats to the contact person of the WERC either by e-mail or by post.

Note: The cover letter with your name only is invalid.

## **10. Application deadline**

**September 14, 2018**

## **11. Screening**

The WERC takes the process of selection in contact with host institutes.

### **<Criteria of Screening >**

1. The applicant's research activity with the host institute meets the purpose and objectives of this program.
2. The motivation of the applicant is appropriate for conducting their research under this program.
3. The applicant satisfies the eligibility requirements for this program.

## **12. Notification**

The WERC is to notify the applicants of the screening results by e-mail or by post if e-mail access is not available. Only successful applicants will receive an admission letter and other necessary documents. The WERC will not respond to individual inquiry concerning the screening process/results.

The results are notified to the applicants in **October 15-19, 2018**

## **13. Obligations of researchers and research students**

You should apply for this program with prior consent to the obligation items 1-19 informed as follows. In the case that the researcher or the research student (hereinafter referred to as the R/S) will not fulfill the obligation, then the admission shall be cancelled and the WERC will take certain measures for it; for example, stopping and/or reclaiming the payment borne by the WERC.

1. The WERC cannot accept applicant's withdrawal from admission after the result notification
2. The recipient of the admission letter shall give a written pledge on this program.
3. The R/S must follow the rules and regulation of the host institute during your research activities concerning entry into controlled areas, facility use, experiments, working time (including office service, holidays), intellectual property rights, etc. R/S shall give a written pledge as required.
4. The R/S shall follow the WERC's instructions concerning administrative procedures, flight travel, accommodation arrangements, and transportation between the designated airport in Japan and the Fukui prefecture. For instance, the R/S has to submit the stubs of boarding pass of his/her flight tickets to the WERC.
5. The R/S shall not commit any act of injustice, negligence or other improper behaviors.
6. The R/S must not engage in any business activities other than research, regardless of reward type.
7. The R/S shall not commit any human rights infringements such as racial discrimination, gender discrimination, sexual harassment, academic harassment, power harassment, abuse, neglect, etc.
8. The WERC will not take any responsibilities or defray the costs incurred from any activity of the R/S's that has no relation to this program. For example, if any family member and/or friend visit Japan to see the R/S, the WERC will NOT pay for any costs incurred from this matter such as flight tickets, accommodation fees, local transportations, etc.
9. The R/S shall not take any accompanying persons along him/herself to stay together in the accommodation provided by the WERC.
10. The R/S's personal travel should be approved by the host institute.
11. In principle, the WERC will not permit the R/S's temporary return or overseas travel during the research period in Japan. However, for an unavoidable reason, the R/S

- must obtain approvals by the host institute and the WERC in advance. The cost pertaining to the travel shall be fully borne by the R/S, though.
12. When the R/S decides to discontinue the research owing to an unavoidable reason, they must obtain an approval by the WERC in advance.
  13. When ascertained the research not to be completed within the planned period, the R/S must report it immediately to the host institute and the WERC in order to receive their instructions.
  14. Upon completion of the research, the R/S shall submit a final report on performance, verified by the host institute, in the official form to the WERC before leaving Japan.
  15. The R/S must not use the information gained through the research for any purpose other than improvement in nuclear safety technology and nuclear application technologies.
  16. If the R/S will take the procedure for intellectual property rights including industrial property rights and copyright concerning any invention and/or design based on his/her research, he/she must let the WERC know it immediately as well as submit an official form to report it within 30 days from the end of the fiscal year concerned.
  17. If the R/S gains revenues from producing the results of the given research on a commercial basis and/or exercising the intellectual property rights of them, the WERC may require them to reimburse a certain amount of the grant paid, in full or in part.
  18. If the R/S will not obey the instructions written in this application guide and/or given by Chairman of the WERC, the WERC shall annul or change the R/S's contract with this program. If the WERC has already paid any cost pertaining to the R/S's activity under this program, then the R/S must refund the cost to the WERC.
  19. The R/S shall compensate by him/herself for all damage/loss/injury claims. Either the WERC or the host institute has no liability for the claims.

#### **14. Protection of personal information**

Personal information given in the application forms is strictly controlled and implemented only for the execution of the WERC's duty. However, the pertinent information of the admitted researchers/research students\* can be presented through the public media such as newspapers, the official website of the WERC, and others.

\* Name, occupation, organization that they belongs to, research themes/summaries, research performance reports, etc.

#### **15. Contact**

Mikiko OJIMA (Ms.)  
 Senior Staff,  
 Fukui International Human Resources Development Center for Atomic Energy/  
 Wakasa Wan Energy Research Center  
 AQUATOM 2F, 2-2-4, Kagura-cho, Tsuruga, Fukui, Japan, 914-0063  
 TEL +81-770-24-7272 FAX +81-770-47-6228  
 E-mail: [international@werc.or.jp](mailto:international@werc.or.jp)

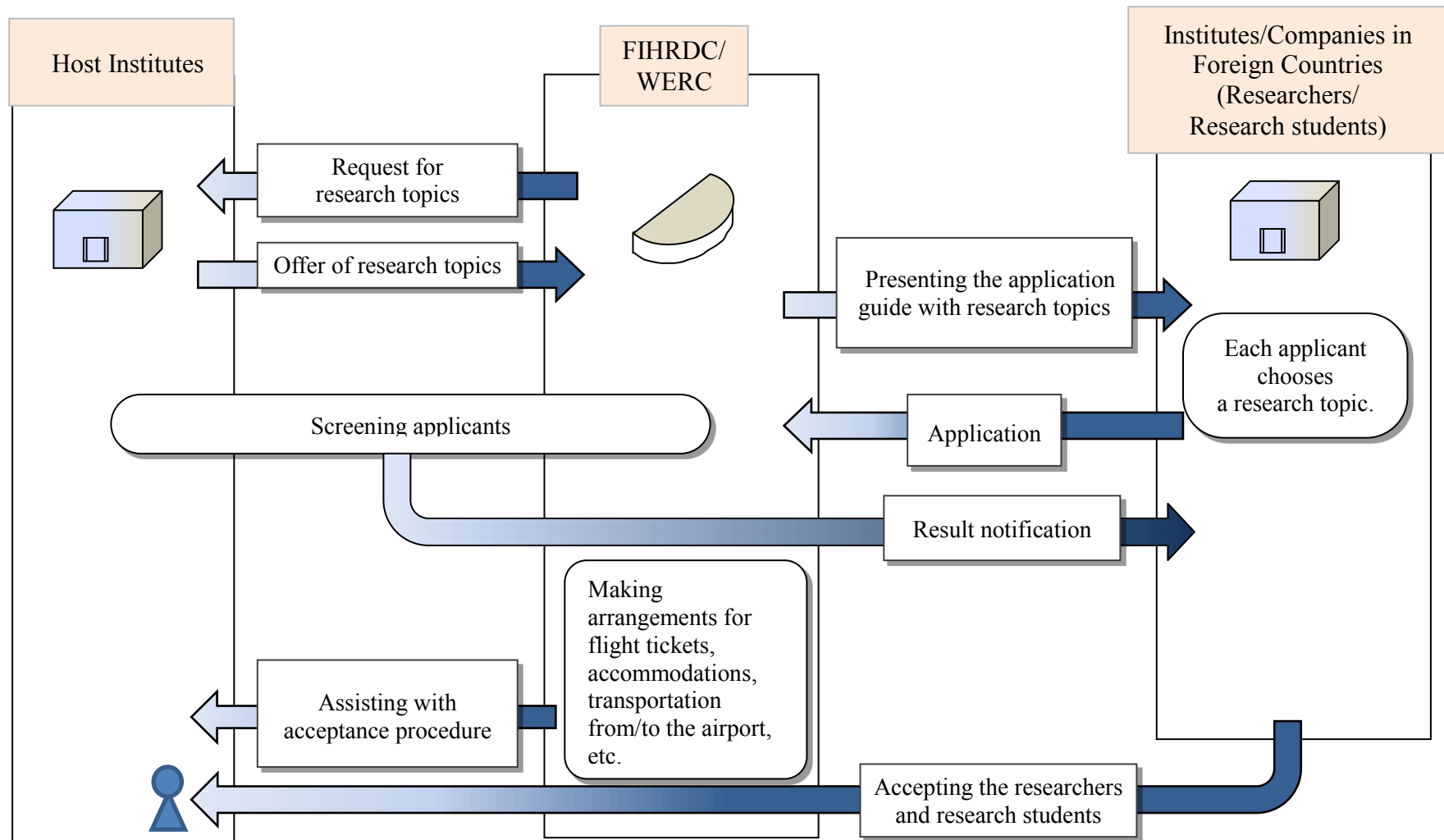


Figure 1 System of the FIHRDC/WERC Accepting Program



Table 1 Expenses borne by the WERC for this program\*

Items	Contents	Requirements/Notes
<b>1. Travel costs</b>		
A. Flight ticket	An economy-class round-trip air ticket between the international airport in the R/S's home country and Japan	<ul style="list-style-type: none"> <li>The travel costs between the R/S's home to the nearest airport shall be paid on the R/S's own expenses.</li> <li>The WERC will decide the flight and pays for the ticket.</li> </ul>
B. Transportation cost between the airport in Japan and the Fukui prefecture	'Picking-up' minibus. Or railway tickets between the airport in Japan and the closest station of the host institute.	<ul style="list-style-type: none"> <li>The WERC arranges and decides the transportation subject to the travel schedule.</li> </ul>
<b>2. Accommodation fees in Japan</b>	<ul style="list-style-type: none"> <li>The accommodation fees during the R/S's stay in Japan.</li> <li>Costs associated with the pertaining contracts are fully borne by the WERC.</li> </ul>	<ul style="list-style-type: none"> <li>The hotel rates are paid only when the R/S has to stay nearby the Japanese airport due to travel schedule.</li> <li>The WERC will select an accommodation type in the Fukui prefecture and near the airport.</li> <li>The WERC will select a single room apartment with essential furniture including the kitchen and the Internet for the accommodation.</li> <li>New furniture and expendable suppliers and materials shall be paid on the R/S's own expenses.</li> </ul>
<b>3. Commutation costs</b>	Fare for a commuter pass in public transportation between the accommodation and the host institute.	<ul style="list-style-type: none"> <li>Commutation costs shall not be paid if the distance between the accommodation and the host institute/organization is less than 2.0 km.</li> <li>Taxis are not included in public transportation.</li> </ul>
<b>4. Medical examination fees</b>	Necessary medical examinations, if the host institute requires.	<ul style="list-style-type: none"> <li>Expenses for issuing the medical certificate required for application shall be paid by the R/S.</li> <li>The WERC also defrays the cost for specific medical examination in case of entry into a radioactive controlled area for the purpose of the R/S's research. It includes Ionizing Radiation Registry health exam.</li> <li>The WERC also defrays the cost for medical examination if it is necessary in Japan.</li> </ul>
<b>5. Overseas Travel Insurance</b>	The travel accident insurance for the R/S's stay in Japan	<ul style="list-style-type: none"> <li>The WERC decides items of insurance coverage.</li> <li><u>Please note that Overseas Travel Insurance here does NOT cover any accidents in the course of the flight journey.</u> Therefore, it is the R/S's liability for contracting with the insurance for the flight journey.</li> </ul>
<b>6. Living Expense Support</b>	The support allowance in cash, 4,000JPY per day will be paid during the researcher's and research student's stay in Japan pertaining to this program.	<ul style="list-style-type: none"> <li>This allowance shall cover the days from entry into Japan up to departure from Japan.</li> <li>The allowance shall be paid monthly at the beginning of each month after being paid for the month of the entry.</li> <li>If the duration of stay changes, this allowance shall be adjusted to the actual duration of stay even after payment.</li> </ul>
<b>7. Academic expenses</b>	Entrance and tuition fees if required. However, this is applicable <u>only for RESEARCH STUDENTS.</u>	<ul style="list-style-type: none"> <li>The WERC will directly pay the academic expenses to the host institute before accepting the research student.</li> </ul>

\* The host institute shall defray the necessary costs for research such as the use and purchase of experimental equipment or reagents, in principle. However, the R/S must pay on their own expenses for the research equipment and/or materials to be their property.

Table 2 List of host institute

<p>The Wakasa Wan Energy Research Center (<b>WERC</b>)</p> <p>URL:<a href="http://www.werc.or.jp/enenews/pdf/pamphlet_english.pdf">http://www.werc.or.jp/enenews/pdf/pamphlet_english.pdf</a></p>
---

Table 3 Research topic

**[For BOTH Researchers and Research Students]**

Application Code	Eligible Person	Host Institute	Research Period
<b>RS4</b>	Researchers and Research Students	<b>WERC</b>	3 months (From December 3, 2018 to February 28, 2019)
<p>Research Topic:</p> <p>Short term effects of ion beam irradiation on an Arabidopsis mutant which lacks a certain factor about DNA damage response</p>			
<p>Abstract:</p> <p>This theme investigates a short term (within a day) effects of ion beam irradiation on seedlings of Arabidopsis mutant which lacks the function of a certain factor (such as KU70, ATR, Rad54 and so on) about DNA damage response by using <math>\gamma</math>H2AX (a marker of DNA double strand break) localization, EdU incorporation (S-phase marker), and aberrant mitotic figures as indexes.</p> <p>Researcher will be able to learn about</p> <ul style="list-style-type: none"> <li>• method of plant preparation for ion beam irradiation</li> <li>• immunofluorescent staining of plant tissue</li> <li>• how to use a laser confocal microscope</li> <li>• how to process image data</li> </ul> <p>Environmental behavior of natural organic substances will be investigated to understand natural processes that control the behavior of radionuclides and toxic elements in river and catchment area.</p> <p>Applicants with the following abilities are desirable.</p> <ul style="list-style-type: none"> <li>• To have a bachelor's or higher degree in biotechnology or agriculture.</li> <li>• Young researcher/student who has knowledges and experimental skills about biology and agriculture.</li> </ul>			